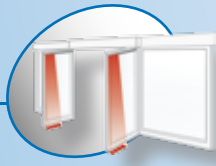


4SAFE

Safety for swing and revolving doors



Increased safety



- One card for wide safety field (4 beams in row = 400mm*)
- Low dead zone (typ. 15cm*)

Intuitive & quick installation



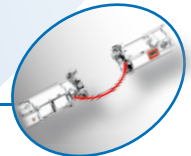
- Sensor configuration in one push (Plug – Push – Go)
- DIP-switch for adjustments in specific cases
- Only one cable to the door controller to secure both sides of a swing door (no other accessories required)

Safe & cost-effective



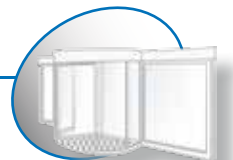
- Long term stability thanks to temperature compensation and optimised IR-LED-activation (no overheating!)
- Low power consumption

Modular design



- Extendible safety field through easy connection of additional cards
- Each card can be used as a MASTER or add-on card (SLAVE) with automatic function recognition
- Modular design (separate components are available)

Universal



- Adapts itself to all environments
- Mounting height up to 3.5m
- Monitoring according to EN13849-1/EN954-1

*2m mounting height

Applications



Swing door



Revolving door

Technical specifications

Technology

Technology: active infrared with background analysis and background suppression
 distance measurement via triangulation
 presence detection; moving

Detection mode: 4

Number of beams: 20% at IR-wavelength of 850nm

Min. reflectivity background/object: 1.1 to 3m

Mounting height: presetting: 2m

Field size (at 2m mounting height): 400mm x 70mm

Number of cards in one chain: max. 6 (at 24V supply voltage)

Max. presence detection time: infinite (SWING-configuration)
 1 minute (REVOLVING-configuration)

Electrical specifications

Supply voltage: 12V - 30V DC; 12V - 27V AC - 50/60Hz

Power consumption: <2WVA for each card

Outputs: 2 independent relay-outputs (max. 42V; max. 1A resistive)

Inputs: 1 free of potential test-input (max. 30V) (only «ON»-version)

Response time at detection: < 70ms; max. 128ms

Response time at monitoring: < 5ms

Mechanical specifications

Material: ABS; aluminium; polycarbonate (PC)
 profile colour: anodised ALU/ black
 front face colour: black

Dimensions: sensor-card: 300mm
 profile: L* x 43.5mm (H) x 47.5mm (D)
 *L: length of profile according to packaging (see Options)

Environmental conditions

Degree of protection: IP53
 Temperature range: -25°C to +55°C
 Humidity: 0-95%, non condensing

Standards/Certification

Conformity: EN13849-1: Performance Level «c» (vgl. EN954-1 CAT.2)
 EN61508: SIL. 2
 EN61000-6-1 / -6-2 / -6-3 / -6-4
 DIN 18650
 EN12978

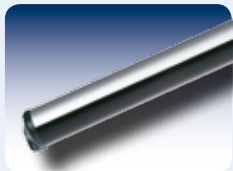
Subject to changes without prior notice

Product range

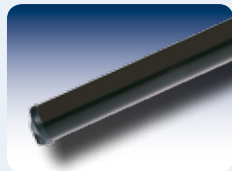
- **4SAFE ON SW:** Configuration for swing doors with monitoring
- **4SAFE OFF SW:** Configuration for swing doors without monitoring
- **4SAFE ON REV:** Configuration for revolving doors with monitoring
- **4SAFE OFF REV:** Configuration for revolving doors without monitoring
- **KITS** in various versions



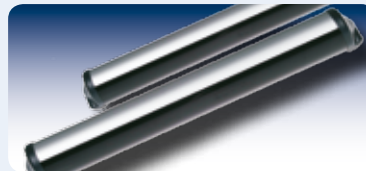
Options and accessories



Profile in anodised ALU



Profile in black



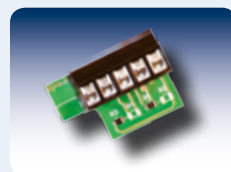
Standard lengths of profiles:
 340mm, 700mm, 900mm, 1100mm,
 1200mm, 1400mm, 1500mm, 2600mm



Spotfinder



Multi-Sensor Hub



Retrofit-Interface